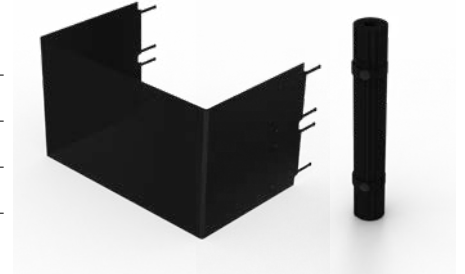


PRODUCT DATA SHEET

| | |
|----------------------------|---|
| Product Supplier | Craster |
| Product Name | Fare Trolley Accessories |
| Code | TO_MOD_MP31F3MEB, TO_MOD_MP31U3MEB, TO_MOD_MP31L3MEB |
| COO | Czech Republic |
| Material and Finish | Poly Mesh, Elastic, Press Studs |
| Product End Use | Display Trolley |
| Revision Date | 13/04/2022 |



Material Information

This item is made from Poly Mesh, Attached elastic attachment straps with steel press stud fasteners and rivets.

Cleaning

Brush off dry or large debris with a dry stiff bristle (non abrasive, non metallic) brush.

Carefully wipe surface with a slightly damp (non abrasive) sponge or cloth, using a neutral detergent diluted in warm water (DO NOT use solvents).

Ensure the product is fully dry before storage.

Maintenance

Not user repairable.

Caution

Do not clean in washing machine.

Company Address

Craster Ltd
Great Western Studios, 65 Alfred Road
London W2 5EU

Company Info

VAT Reg No. 599599046
Registered in England
Company No: 4503732

UK Telephone

+44 (0) 203 004 4750

USA Telephone

+1 732 543 7862

Email

info@craster.com

Web

www.craster.com