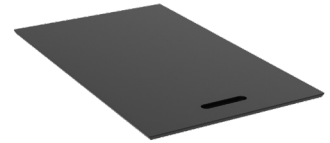


| | |
|----------------------------------|--|
| Product Name | Fare Ice Well Drop-In & Lid |
| Codes | TO_MOD_DI11IWD |
| COO | Czech Republic |
| Material | <i>Ice Well:</i> Bead Blasted Stainless Steel <i>Lid:</i> Compact Laminate |
| Product End Use | Food Presentation |
| Declaration of Compliance | EU regulation 1935/2004/EC (With reference to DIN 10955) + Council of Europe Resolution CM/Res(2013)9 – Technical Guide on Metals and Alloys used in food contact materials. |
| Revision Date | 18/03/2025 |



Guidance

For guidance on installation and use, please refer to the product's use instructions document.

Cleaning & Maintenance

Craster recommends cleaning the Ice Well and Lid with a non-abrasive cloth using a mild detergent. Ensure all detergent is removed with damp cloth and dry thoroughly with a soft towel to prevent water spots.

Caution

DO NOT use abrasive scourers on this product as they may damage the bead blasted finish.

Company Address

Craster Ltd
Great Western Studios, 65 Alfred Road
London W2 5EU

Company Info

VAT Reg No. 599599046
Registered in England
Company No: 4503732

UK Telephone

+44 (0) 203 004 4750

USA Telephone

+1 732 543 7862

Email

info@craster.com

Web

www.craster.com